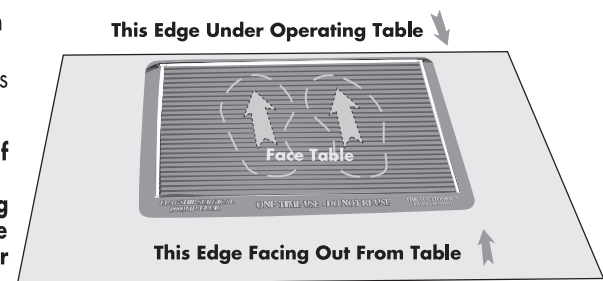


THE SUCTIONER™

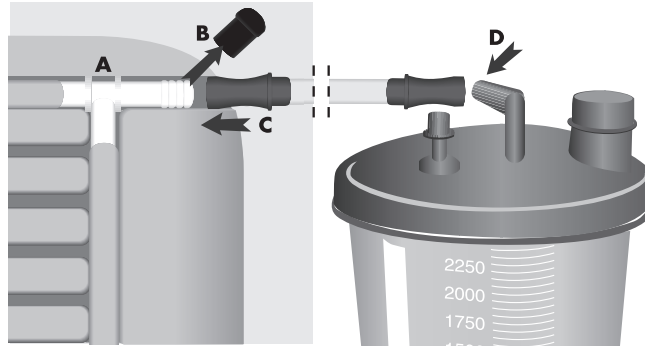
Cat.# USA-X10 (8 mats/case) 36 in x 56 in (888)633-5843 PATENT PENDING

- 1) Remove The Suctioner™ from the plastic packaging and determine the proper position on the operating room floor. The floor MUST be completely dry and clean prior to placement of the Mat on the floor. Completely unfold and spread out the absorbent sides of the Mat so that they lie completely flat on the floor (see picture)

IMPORTANT NOTE: It is critical to make sure the Mat is placed directly under the source of fluids coming down from the surgical site to ensure proper suctioning and collection of fluids. Placing the Mat slightly under the surgical table may help to ensure better suctioning and collection of fluids coming down from the surgical site. It is also critical to make sure the surgical drapes are hanging over or laying directly on top of the Mat to ensure proper suctioning and collection of fluids falling downward from the surgical field (see below).



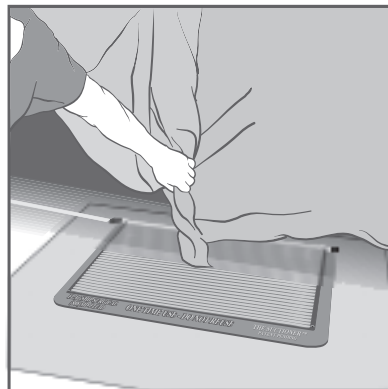
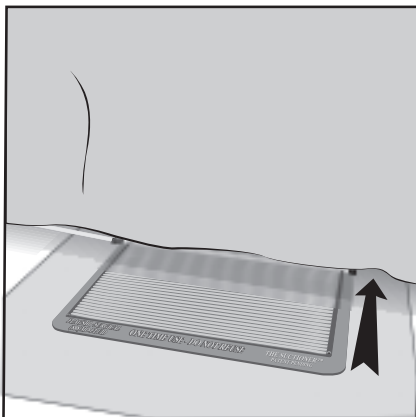
- 2) Standard operating room suction tubing (not included with the Mat) must now be connected to the Mat and to a fluid collection canister or other suction source. On the Mat, locate the "T" Connector (A) on the upper right or upper left corner which is closest to the fluid collection canister or other suction source. Remove the vinyl protective cap (B) on the chosen "T" Connector and attach the suction tubing (C) to the Mat. Then connect the other end of the suction tubing to the fluid collection canister (D) or other suction source (see picture).



IMPORTANT NOTE: Tape any excess suction tubing to the floor to help prevent the risk of tripping. Make sure there are no objects on top of the suction tubing or the tubing incorporated into the Mat to ensure proper suction function.

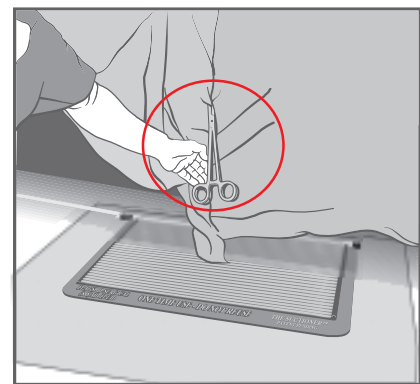
Suggested Draping Method

- 3) In order for fluids to be suctioned and collected effectively, the drapes MUST hang over or lay directly on top of the Mat.



Fluids follow the pathway of the drapes. By twisting the drapes around each other, a V-Shape or funnel-shape is created with the drapes above, which now aims downward toward The Suctioner™. This will ensure that a majority of the fluids will hit the Mat and be suctioned away!

- 4) Following standard patient draping, twist the drapes around each other at the bottom, directly above the floor. Take any standard, heavy clamp (a Sponge Stick is ideal) and clamp the twisted drapes so that the clamp hangs several inches over The Suctioner™. That's it!



Note: Occasionally, it may be necessary to add additional drape clamps to redirect the fluids toward the Mat during the surgical procedure, as the drapes may shift during surgery.

- 5) The Mat is now ready for use.

IMPORTANT NOTE: Once the surgical procedure has begun, the Mat should not be repositioned as fluids may collect underneath the Mat which can cause slippage and injury.

- 6) At the conclusion of the surgical procedure, disconnect the suction tubing from the Mat and fold the outer absorbent sides of the Mat back on top of the Mat, similar to when it was originally opened. Roll up the Mat and discard the Mat with other contaminated items, pursuant to hospital regulations and guidelines. NEVER attempt to reuse the Mat.

CAUTION: Do not use the Mat on uneven or textured surfaces as slippage may occur, causing an injury.

THE SUCTIONER™ is a One-Time Use, Disposable Product!

It **cannot** be cleaned and should never be reused to help prevent cross-contamination throughout the operating room.

THE SUCTIONER™

Cat.# USA-X10

(8 mats/case)

36 in x 56 in

(888)633-5843

PATENT PENDING

Additional Terms

These terms and conditions apply to your ("Customer") purchase and use of The Surgical Mat™, The Mini Mat™ or The Suctioner™ (collectively, the "Mat") provided by Flagship Surgical, LLC (the "Company").

WARRANTY. For a period of forty five (45) days after delivery of the Mat to Customer (the "Warranty Period"), the Company warrants that the Mat will be free from any material defects when used in accordance with the provided instructions. Customer shall notify the Company in writing of any warranty claim and if the warranty claim is properly made during the Warranty Period, the Company's sole obligation, and Customer's exclusive remedy shall be for the Company to replace the defective Mat or, in the Company's sole discretion, provide Customer with a full refund of the purchase price paid for the defective Mat.

DISCLAIMER OF WARRANTIES. EXCEPT AS OTHERWISE SET FORTH HEREIN THE MAT ARE PROVIDED "AS IS" WITHOUT ANY WARRANTIES OF ANY KIND AND THE COMPANY HEREBY DISCLAIMS ALL OTHER WARRANTIES, WHETHER EXPRESS OR IMPLIED, INCLUDING, BUT NOT LIMITED TO, IMPLIED WARRANTIES OF MERCHANTABILITY OR FITNESS FOR A PARTICULAR PURPOSE. The limited warranty set forth above gives Customer specific legal rights. Customer may have additional rights that vary from jurisdiction to jurisdiction. THE COMPANY SHALL NOT BE LIABLE FOR ANY USE OF OR CIRCUMSTANCES RELATING TO CUSTOMER'S IMPROPER USE OF THE MAT, INCLUDING, BUT NOT LIMITED TO, CUSTOMER'S OWN NEGLIGENCE.

LIMITATIONS OF LIABILITY. IN NO EVENT WILL THE COMPANY'S CUMULATIVE LIABILITY EXTEND BEYOND CUSTOMER'S ACTUAL, DIRECT, PROVABLE DAMAGES IN AN AMOUNT NOT TO EXCEED THE AMOUNT PAID BY CUSTOMER FOR THE MAT. IN NO EVENT WILL THE COMPANY BE LIABLE FOR ANY PUNITIVE, AGGRAVATED, EXEMPLARY, SPECIAL, CONSEQUENTIAL, INCIDENTAL OR INDIRECT DAMAGES OR ANY LOSS OF PROFITS, LOSS OF BUSINESS OR GOODWILL HOWEVER CAUSED, WHETHER FOR BREACH OF WARRANTY, BREACH OF CONTRACT, TORT, NEGLIGENCE, OR OTHERWISE, EVEN IF THE COMPANY HAS BEEN ADVISED OF THE POSSIBILITY OF SUCH DAMAGE.

GOVERNING LAW. The terms hereof shall be governed by and construed in accordance with the laws of the State of New Jersey, without regards to its conflicts of law principles.

CONFLICTS. In the event Customer issues a purchase order in connection with the purchase of the Mat, the terms and conditions contained herein shall control if such purchase order contains terms and conditions that are inconsistent with or conflict with the terms contained herein.

FLAGSHIP
SURGICAL

FLAGSHIP SURGICAL, LLC
16 Mt. Bethel Road, Suite 313
Warren, NJ 07059

www.flagshipsurgical.com



NON-STERILE



SINGLE USE ONLY



Manufactured by an
ISO 9001:2008
Certified Company

ISO 9001:2008

